

Russ Alger

Director - Institute of Snow Research
Keweenaw Research Center
Michigan Technological University
www.mtukrc.org



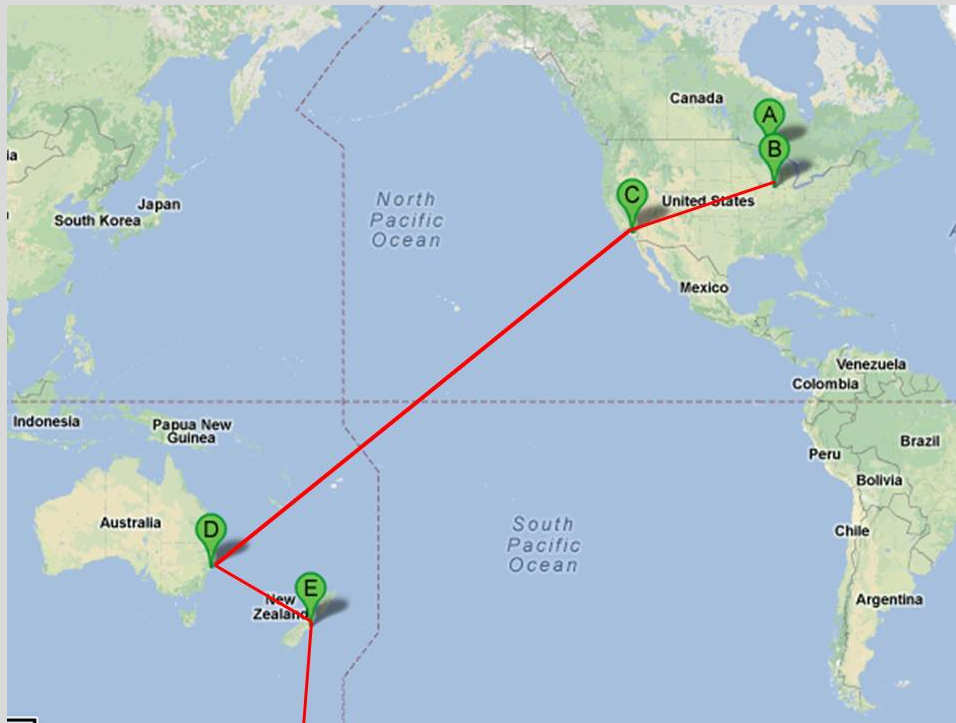


A New South Pole Station

Materials, Supplies, Fuel

**Start Out Low or Gain
Elevation Quickly?
By Air or by Land?**

Off to Antarctica





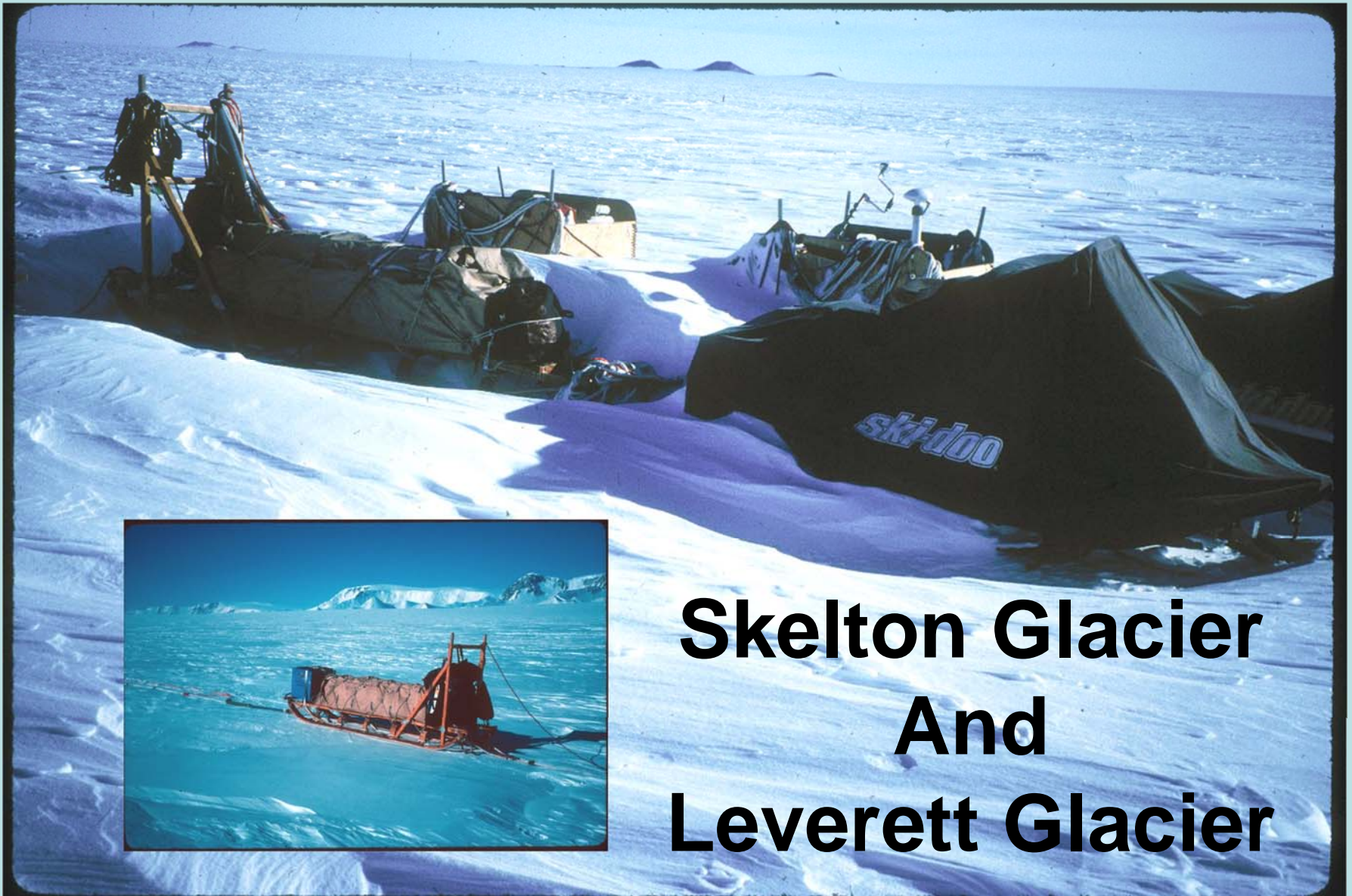
And A Search for a Runway at Murdo

The Airport Shuttle





In the Beginning.....1995



Skelton Glacier And Leverett Glacier



The Shear Zone



With.....

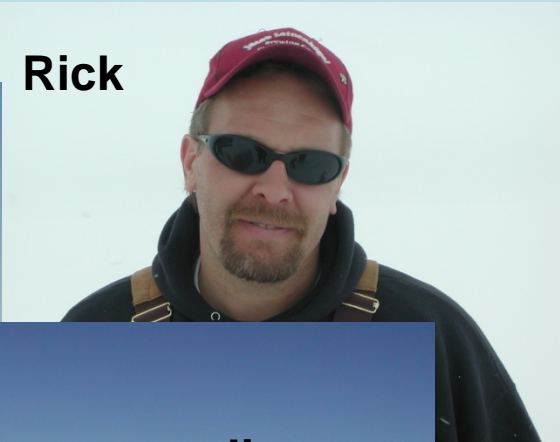
John



Brad



Rick



Jim



Allan



Russell



Kim



Tom



The Snow Guy



Shaun



Then Off to Camp



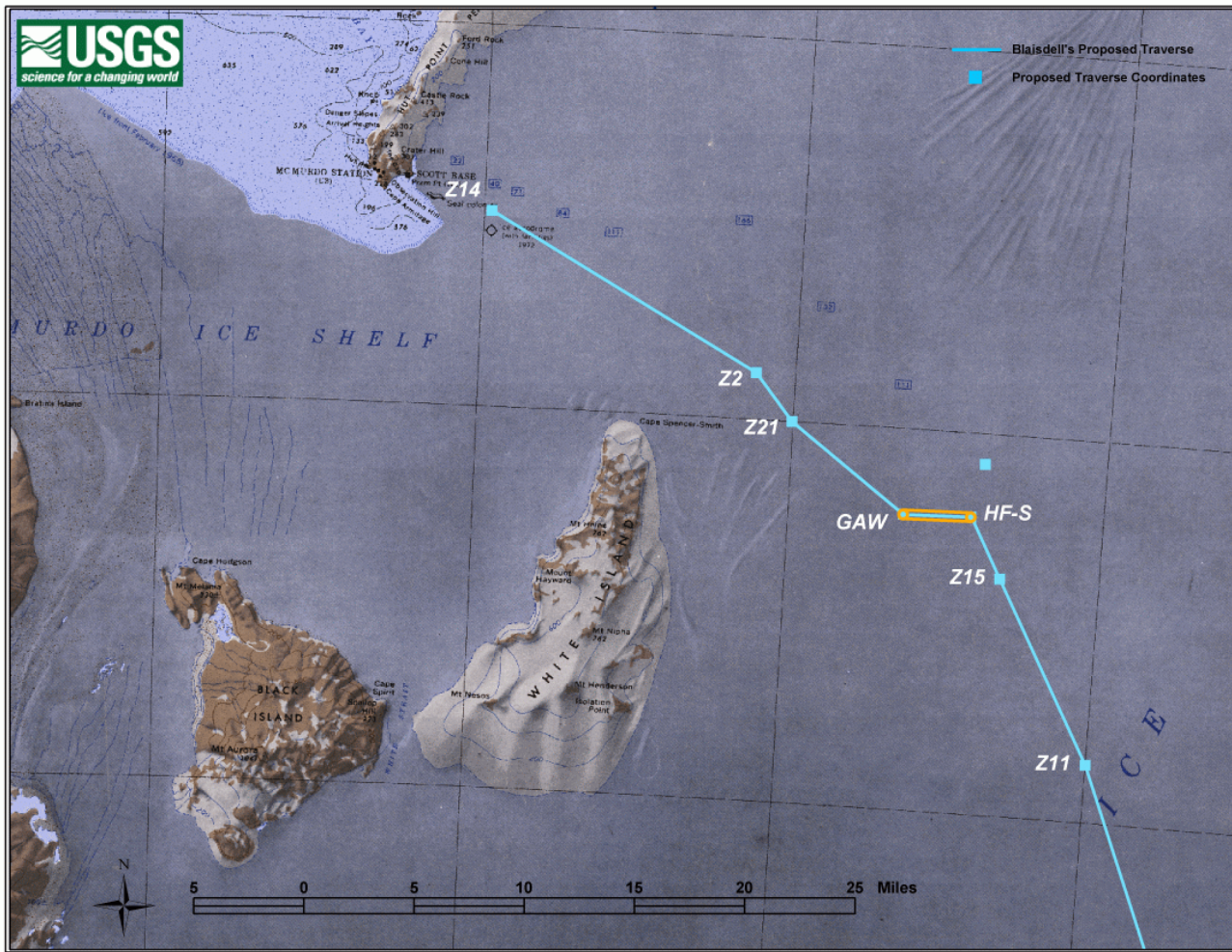
Antarctica

About 40 miles from McMurdo

Area of Interest



“Near Zone”?



A Moving Field Camp



View from the Shear Zone Camp

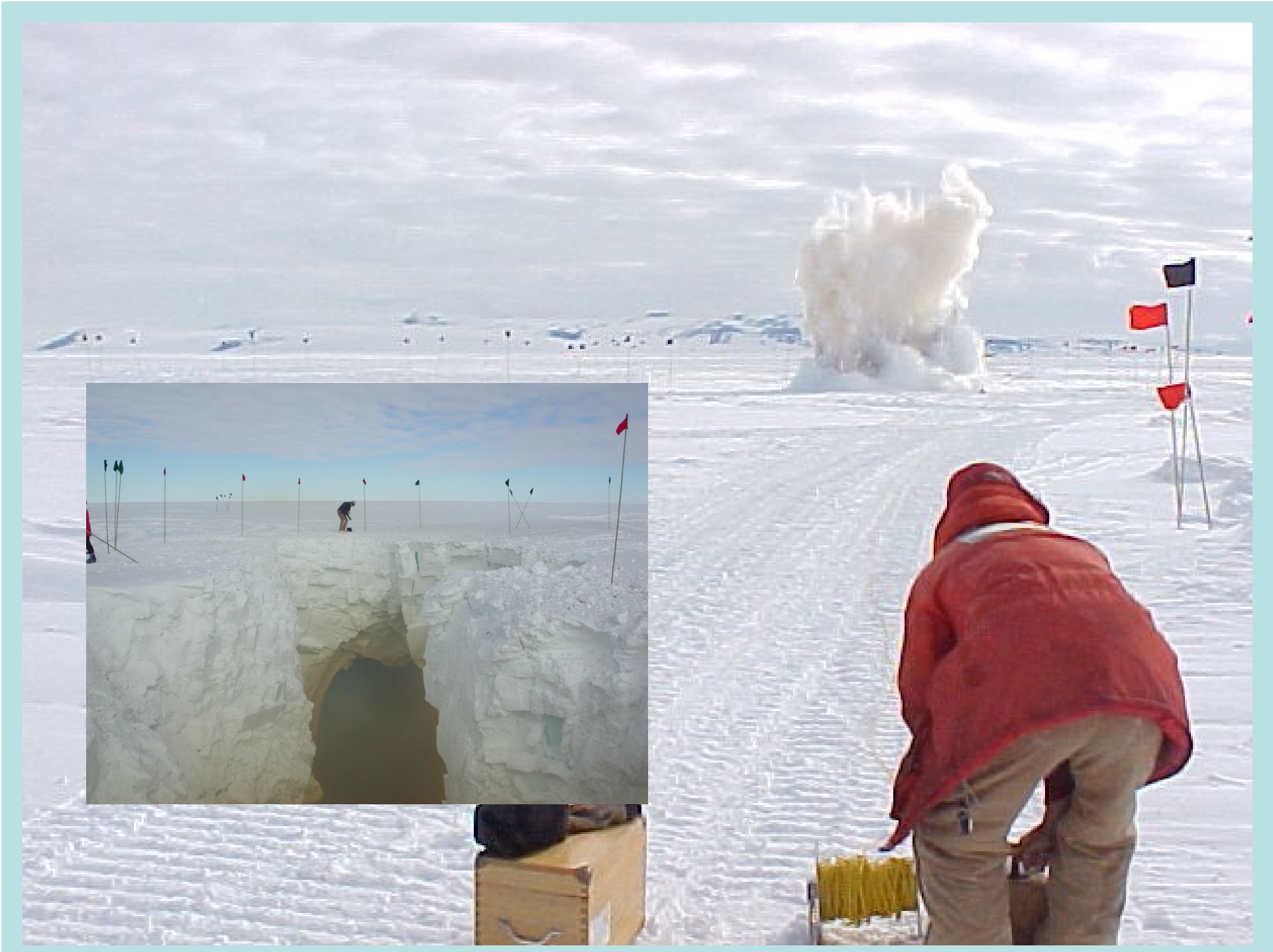


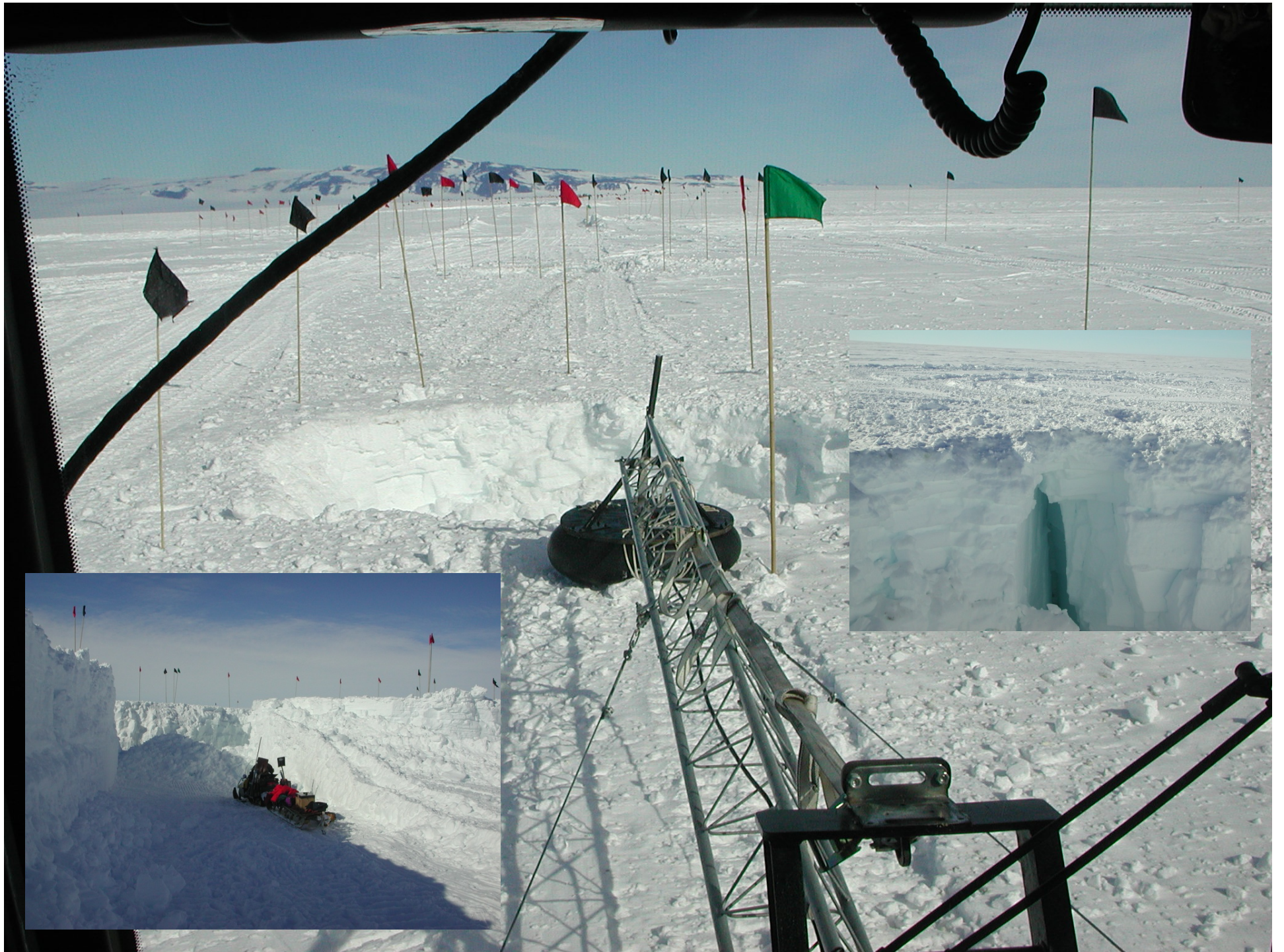
GPR Crevasse Location

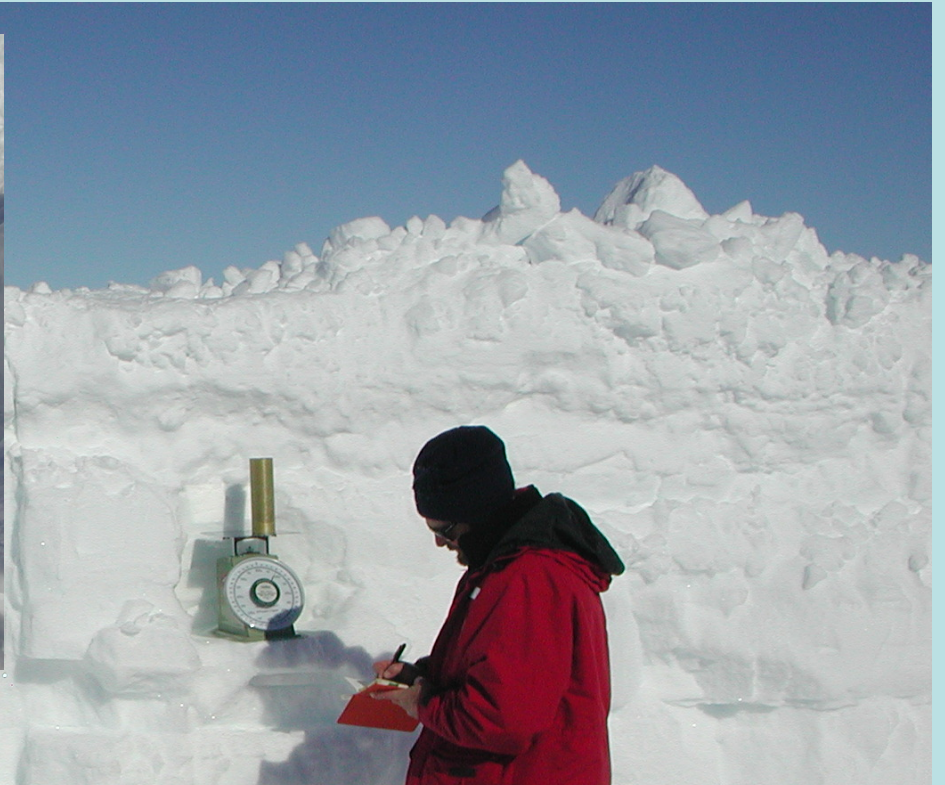
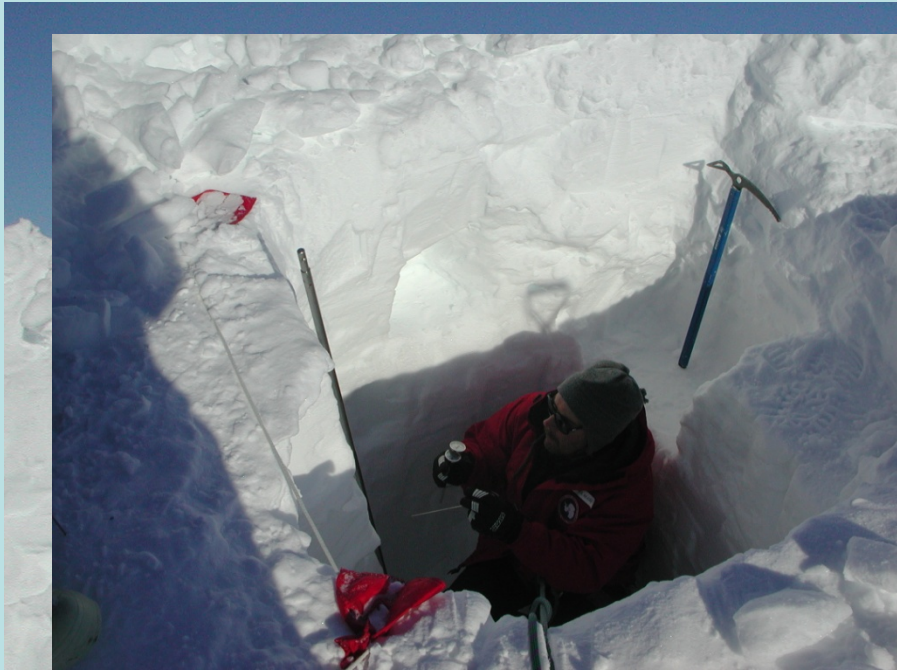


Open Crevasses









Crevasse Investigations



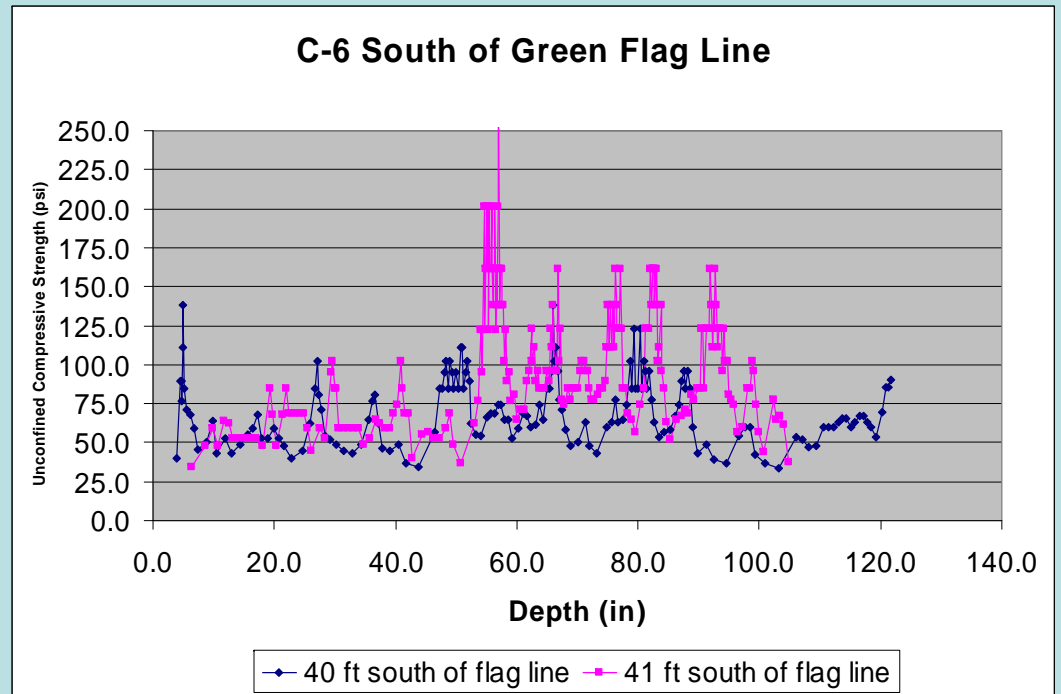




On Bridge Crevasse # 6		
Depth (cm)	Density (g/cc)	Temperature (Deg C)
5		-14
25	0.40	-18
50	0.37	-17
75	0.40	----
100	0.40	-20
125		-20
150	0.40	-22
200	0.39	



D8 – 85,000 #





Then Fill Them In



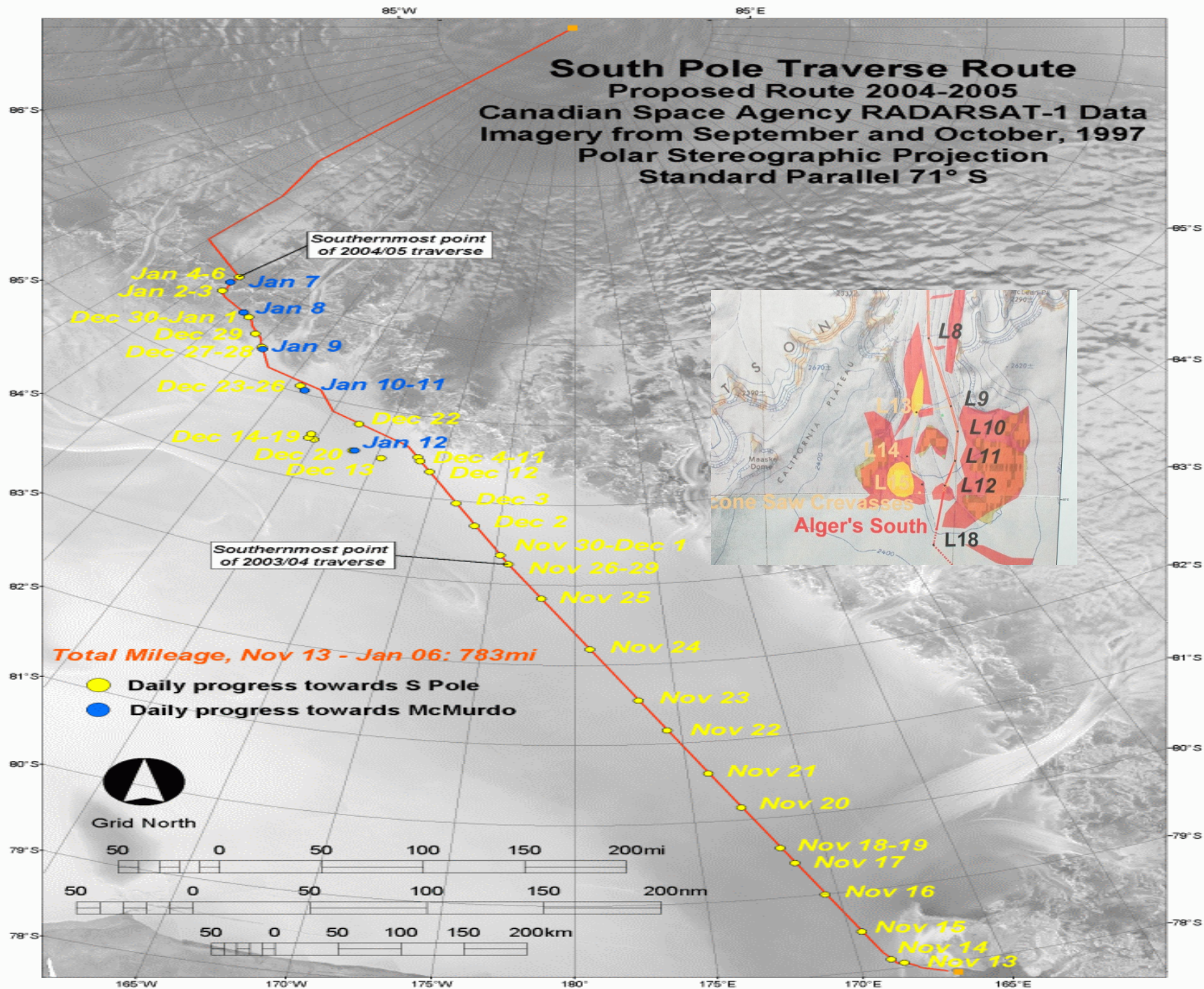
A red tracked vehicle, possibly a military or expedition vehicle, is shown in a snowy, foggy environment. The vehicle has a white circular logo on its side and is carrying a large yellow box on its back. The background is a hazy, white landscape.

But it's a Dry Cold!!!

Spring on the Shear Zone



**Summer's Just
Around the Corner**









Case QuadTrac 535

Weight = 53,000#

Length = 25 ft

Height = 13 ft





Questions?

