

# ARCTIC TRUCKS

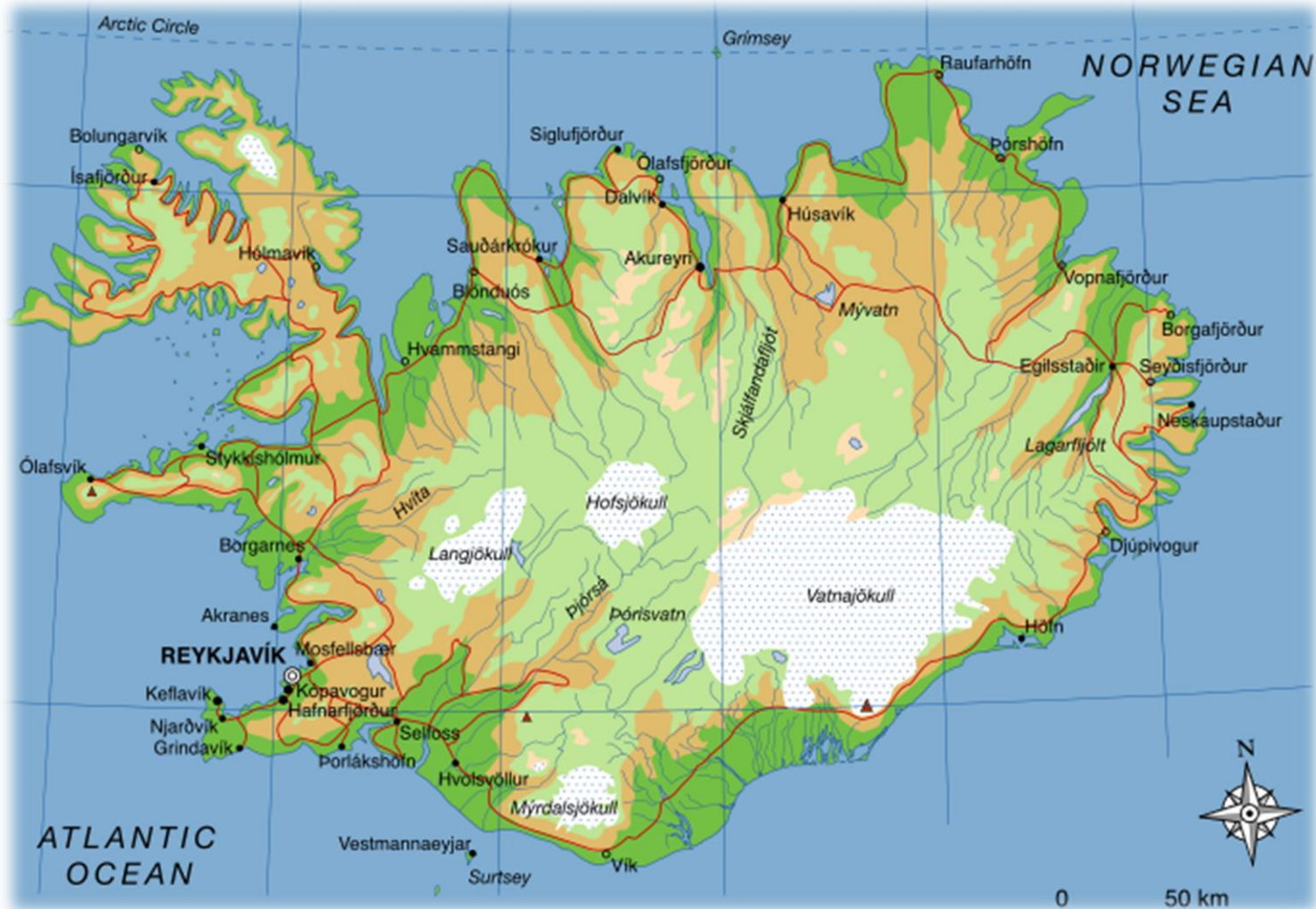
Polar Technology Conference 2015 Denver



# Arctic Trucks – Originated in Iceland



Harsh and challenging environment





# “Common” situations in Iceland



# Arctic Trucks background



- The very **harsh environment** in Iceland created need for more capable vehicles for snow, rivers, sand, bad roads.
- **Resourceful people** began getting interesting results in the 70's in making more capable 4x4, "race vehicles".
- In mid 80's **practical solutions** began emerging, quickly gaining popularity with enthusiasts, farmers, utility companies, rescue operators and etc.
- Generally automotive distributors **acted against** this development concerned about service and warranty.
- 1990 - after years of "conflicts" with customers Toyota Iceland **begins offering** solutions, and later named this operation Arctic Trucks (AT)

# Arctic Trucks background



- Arctic Trucks celebrates 25 years anniversary this year
- Headquarters in Reykjavík Iceland



# Arctic Trucks International



- Arctic Trucks today has an operation around the world
  - Iceland – headquarters - production and a shop
  - Norway – production and defence part
  - Dubai UAE – production
  - Antarctica – operation of vehicles and service
  - UK – Sales and licenced Antarctica operator
  - Finland – franchise dealer
  - Russia – franchise dealer(13 workshops)
  - Poland – franchise dealer
  - South-Africa – franchise dealer
  - 150 employees worldwide

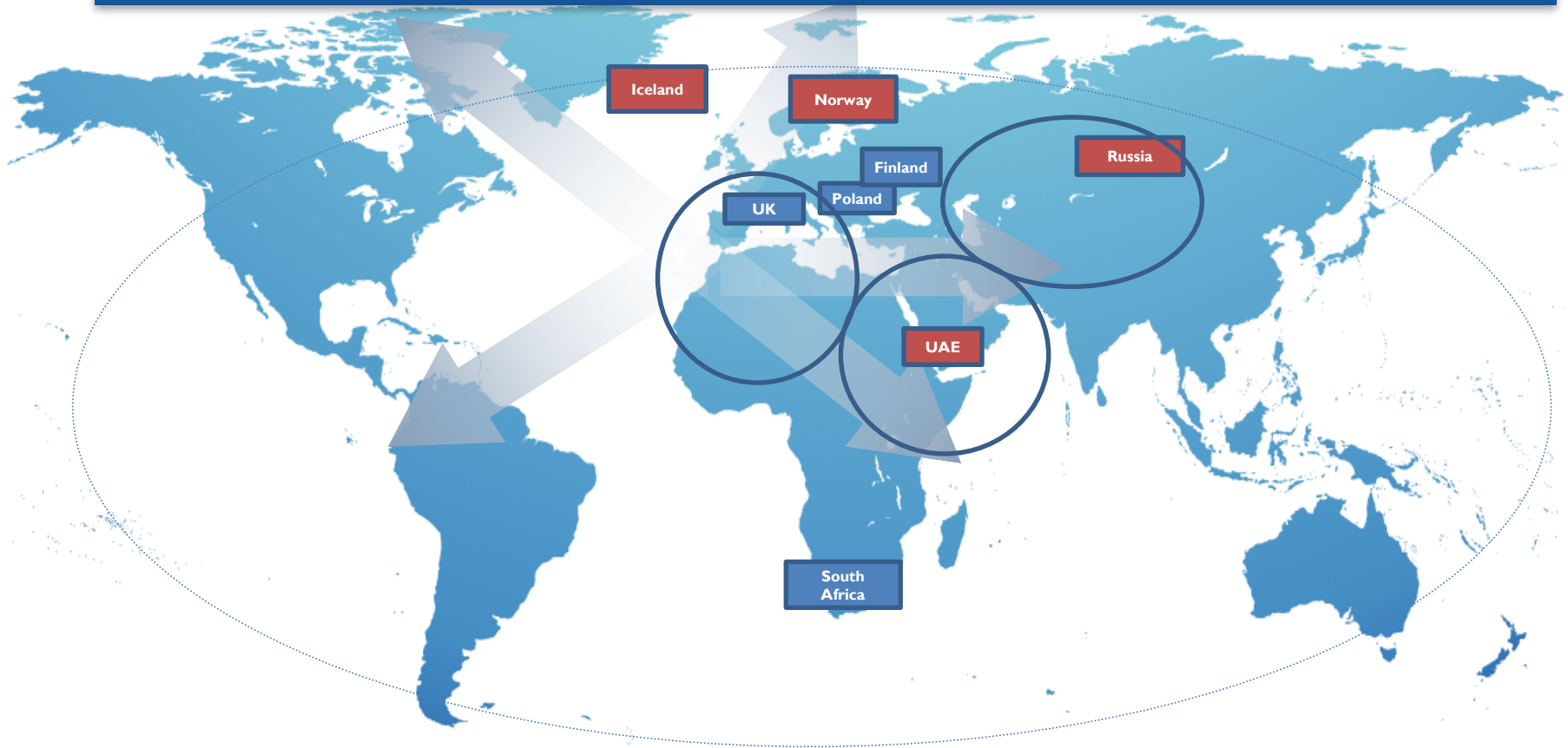


# Arctic Trucks International



## From workshop to factory

International expansion



# Business overview



## The "AT Concept

- Adding excitement and/or utility to the Toyota 4x4 vehicles
- Sales and Service through the Toyota dealer system
- Based on a co-operation agreement with each Toyota NMSC/distributor



## Expedition vehicles and science support

- World first or challenging expeditions, attracting positive and exciting attention to Arctic Trucks and Toyota
- New product testing and development for extreme conditions.



## Large Fleet sales

- Adapting Toyota 4x4 vehicle to better meet and service specialized requirement
- Sold and serviced through Toyota dealers or directly through Arctic Truck



## Arctic Trucks Experience

- Supporting the AT Concept by offering exciting driving experience.
- A Customer Relation tool for Toyota dealers
- Supporting Fleet Sales with high level drivers training



## Accessories

- Specialized products attractive for the Arctic Trucks customers, developed or branded as Arctic Trucks products or co-branding



# AT33 – AT44 4x4





# AT44 6X6





# Rescue vehicles





# AT42 NATO



# MB Sprinter AT46

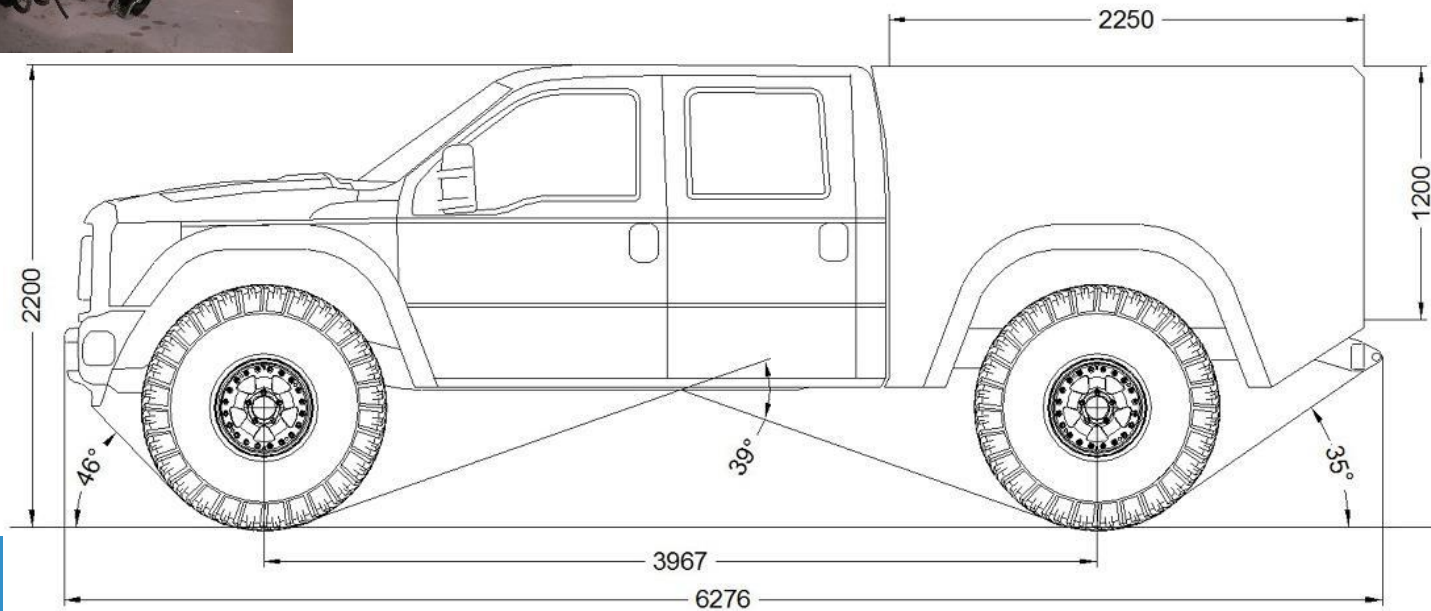
The most recent project!





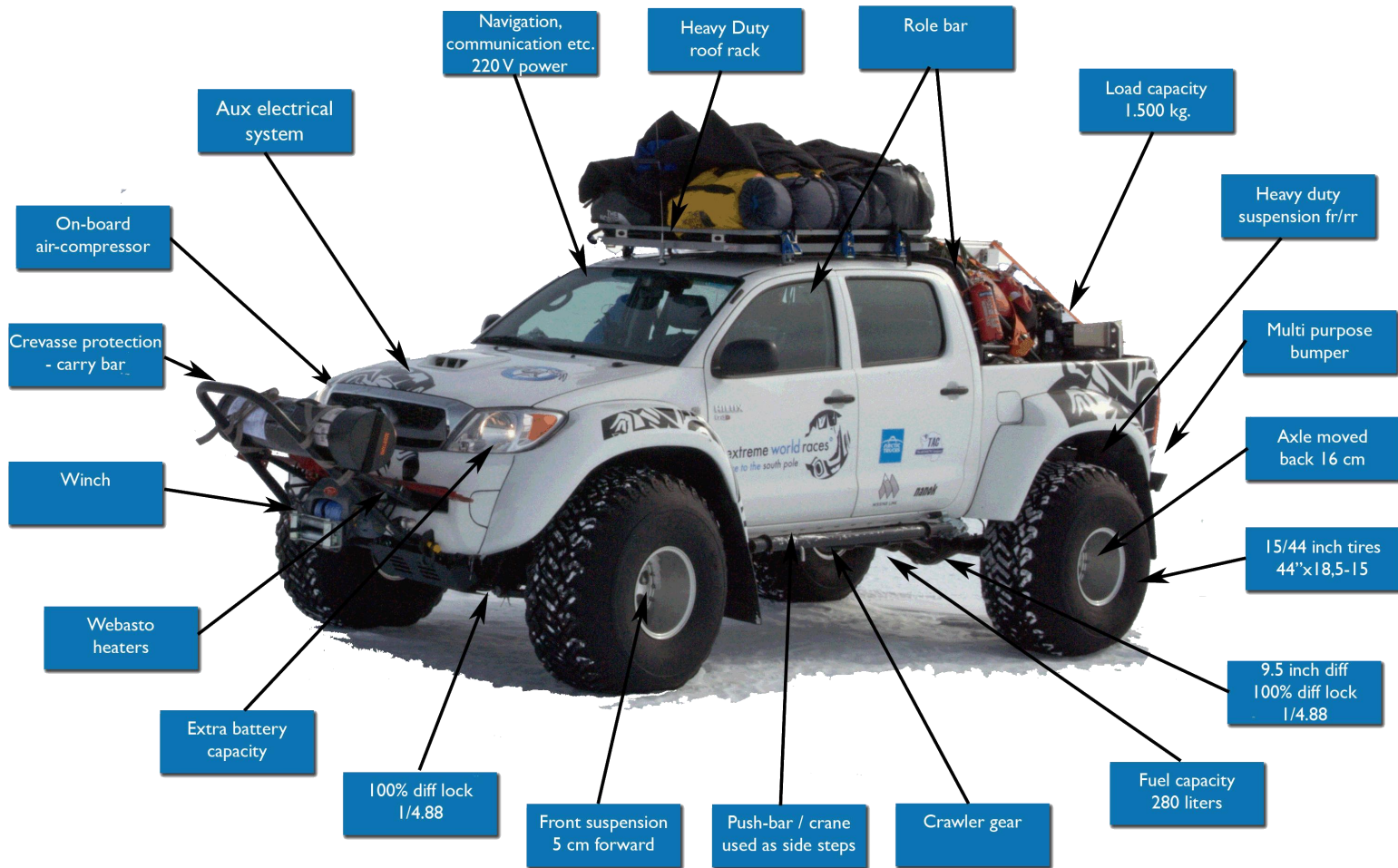
# Ford F350 AT47

The most recent project!





# Base, Hilux 3.0 diesel, 5sp Automatic



# AT 38 inch snow tire

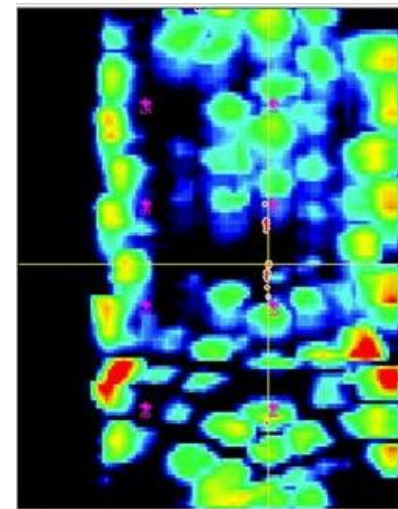
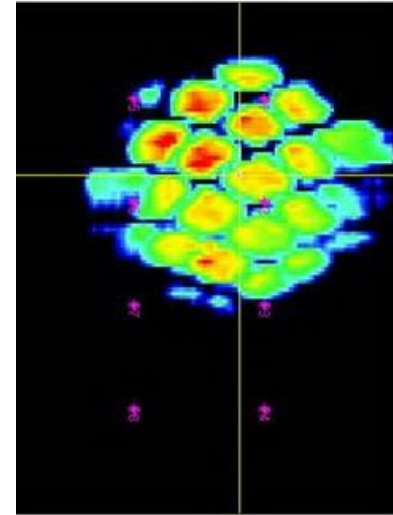


Arctic Trucks has developed a 38" snow tire.

In cooperation with the tire manufacturer NOKIAN, Arctic Trucks has now new 35" winter tire.

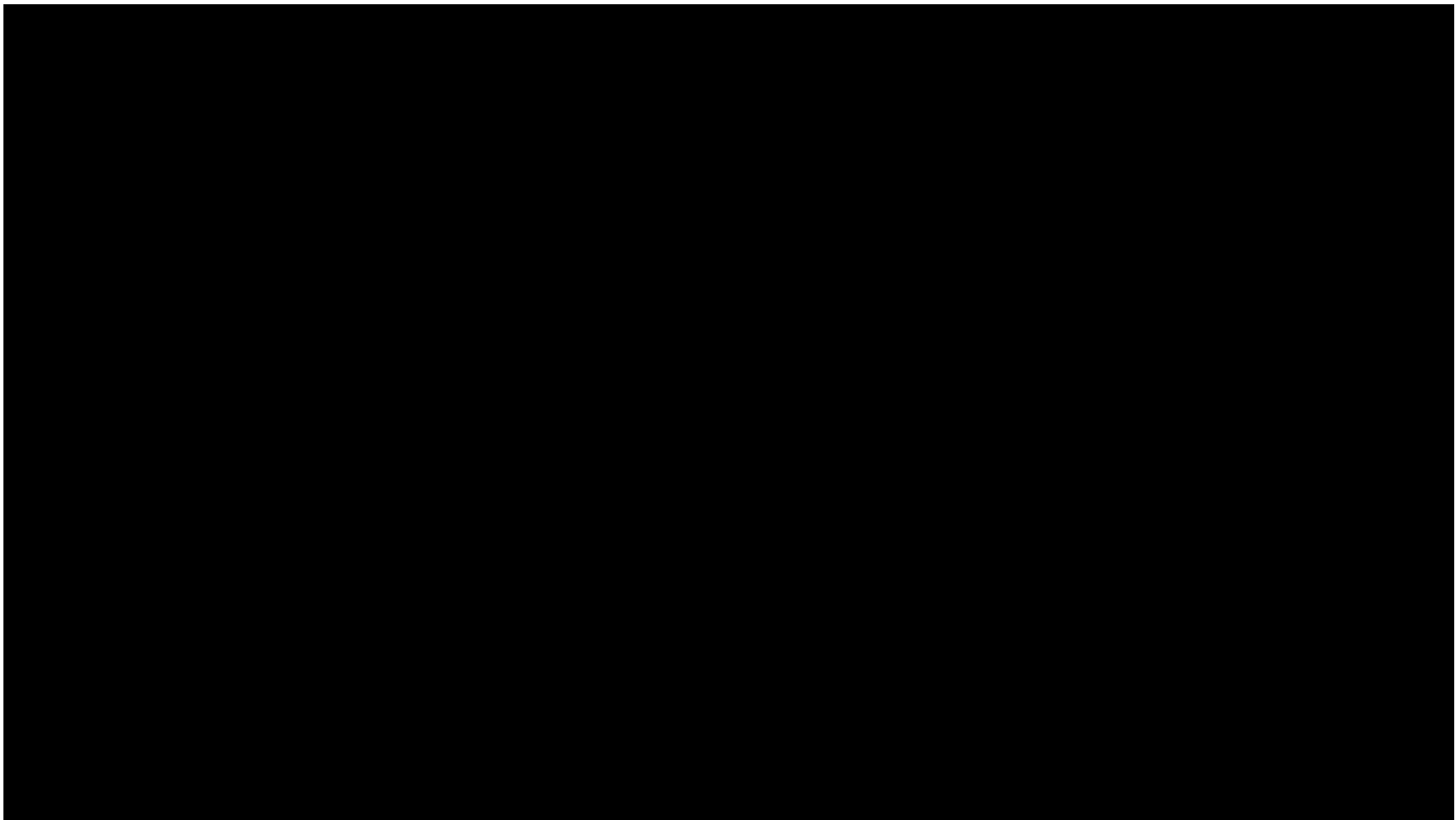


# A belt vs. tire





# Belt vs. Tire



# Arctic Trucks vehicles



- 3 to 5 times reduce fuel use
- Greatly reduced travel time
- Greatly reduced maintenance
- Increased comfort and easy of use



**A great addition to the current fleet opening new possibilities**

# Antarctica 1996/1997





# Greenland crossing 1999





# Top Gear, Magn. North Pole 07



# Antarctica 2013





# Antarctica 2014



# Antarctica 2014



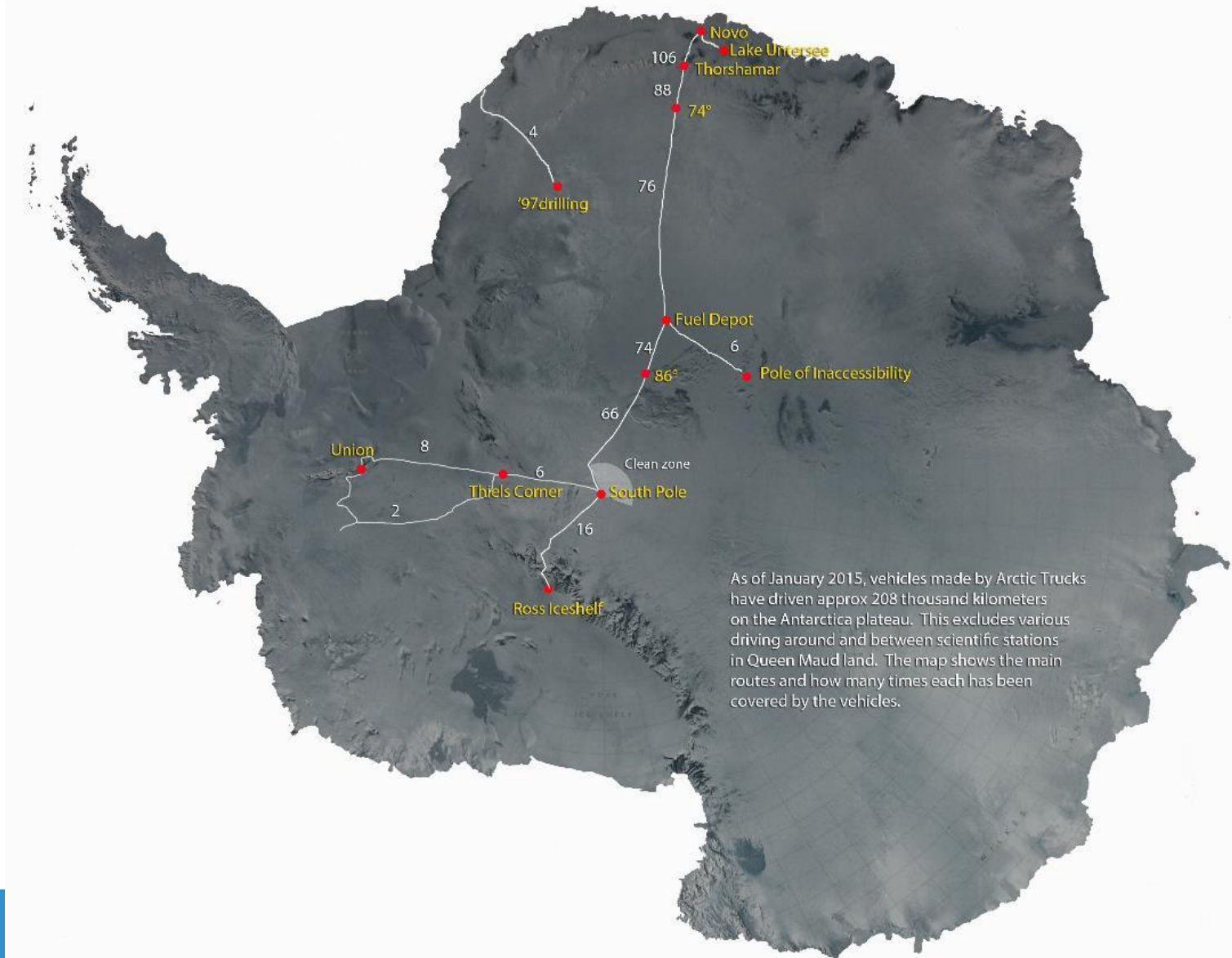


# Antarctica 2015





# Ground breaking expeditions

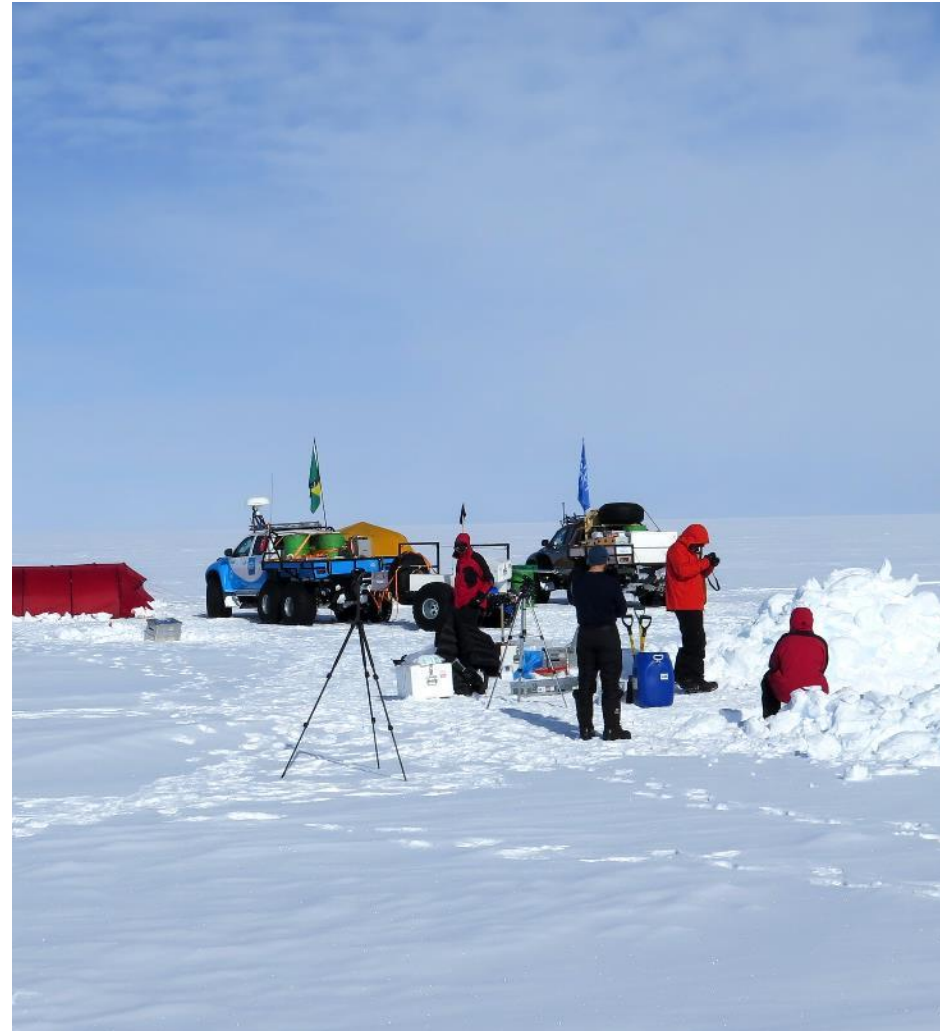


As of January 2015, vehicles made by Arctic Trucks have driven approx 208 thousand kilometers on the Antarctica plateau. This excludes various driving around and between scientific stations in Queen Maud land. The map shows the main routes and how many times each has been covered by the vehicles.

# Arctic Trucks Science Support



- Use of Arctic Trucks 4x4 / 6x6 vehicles
- Camping gear
- Communication and navigation equipment
- Generators
- Camp logistics
- Paramedics
- Route planning
- Other service needed for a successful scientific expedition



# Water maker & Tent heater







# Training in Iceland





# Training in Iceland





Thank you

